



Customizable Slim Evening Dress Sexy Legging MIDI Canary Long Sleeved Maxi Dress

Our Product Introduction

for more products please visit us on stylishladydress.com

Basic Information

- Place of Origin: china
- Model Number: 9636
- Minimum Order Quantity: expand on
- Price: expand on

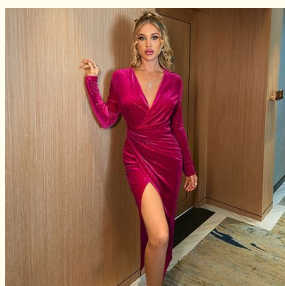


Product Specification

- Season: Autumn/Winter
- Fashion Element: Pleuche
- Closure Type: Pullover
- Neckline: V-neck
- Material: Cotton,polyester Fiber
- Size: S, M, L
- Occasion: Evening
- Name: Slim Evening Dress
- Characteristic: Slim Fit
- Highlight: **Customizable Slim Evening Dress,
Slim Evening Dress Sexy Legging,
MIDI Canary Long Sleeved Maxi Dress**



More Images



Product Description

Customizable evening dress Sexy legging-long sleeved MIDI canary maxi dress

Technical Parameters:

Attribute	Value
Embellishment	Embroidery
Color	Customizable
Sleeve Length	Long Sleeve,sleeveless
Closure Type	Pullover
Fashion Element	Falbala,sloping Shoulder,slit
Pattern Type	Solid
Waistline	High Waist
Neckline	V-neck
Material	Cotton,polyester Fiber
Style	Slim
Description	Modern Dress For Women Party Wear, Latest Dresses For Ladies Party Wear,

Product Description:

This slim-fit evening dress is perfect for any special occasion. It is designed for women who want to look stylish and traditional at the same time. The dress features a slim-fit cut, canary, slit and V-neck. It is also available in long sleeve, sleeveless, S, M, L sizes. This is the perfect dress for ladies who want the latest fashionable women's clothing. You can wear it for any special occasion, such as a party. So, don't miss the opportunity to prepare a stylish traditional dress for the ladies to look your best.



Features:

Product Name: **Slim Evening Dress**
Color: **Customizable**
Name: **Slim Evening Dress**
Size: **S, M, L**
Closure Type: **Pullover**
Embellishment: **Embroidery**
Stylish Traditional Dresses for Ladies
Classy Dresses for Women
Modern Dress for Women Party Wear

Applications:

A slim evening dress is a must-have for women who want to stay trendy and fashionable. It's the perfect outfit for any special event or formal occasion. This dress is made with high-quality fabric from China, making it the perfect choice for Autumn/Winter. It's available in solid color options that are sure to make you stand out from the crowd. You can choose from sizes S, M, or L to find the perfect fit for your body. Whether you're looking for a classic and timeless look or something more modern and stylish, this slim evening dress will make you look and feel your best.

Be the talk of the town with this slim evening dress. Women everywhere are raving about the new fashion trends, and this dress is the perfect way to stay ahead of the curve. With its elegant design and comfortable fit, it's sure to make you look your best. Show off your style and make sure you stand out with this stylish outfit. Get ready to receive compliments and have all eyes on you in this slim evening dress.

Customization:

Custom womens stylish dresses - Slim Evening Dress
Place of Origin: China
Style: Slim
Fashion Element: Falbala, Sloping Shoulder, Slit
Name: Slim Evening Dress
Sleeve Length: Long Sleeve, Sleeveless
Occasion: Evening

Perfect for special occasions, this slim-fit evening dress is the perfect way to stay stylish. With a hip wrap and a slit, this feminine fashion dress is sure to make you stand out. Available in both long-sleeved and sleeveless styles, this stylish ladies' look is a must-have in any wardrobe.

FAQ:

Q: What is the place of origin for the Slim Evening Dress?

A: The place of origin for the Slim Evening Dress is China.

Q: What kind of fabric is used for the Slim Evening Dress?

A: The fabric used for the Slim Evening Dress varies depending on the style.

Q: What sizes are available for the Slim Evening Dress?

A: The Slim Evening Dress is available in various sizes, please refer to the product description for more information.

Q: Is the Slim Evening Dress machine washable?

A: The washing instructions for the Slim Evening Dress will depend on the fabric used for the dress. Please refer to the product description for more information.

Q: What is the return policy for the Slim Evening Dress?

A: We provide a 30-day return policy for the Slim Evening Dress. Please refer to the product description for more information.

VINAS DRESS Guangzhou Vinas clothing technology Co., LTD



15827133024



leopeng15827133024@gmail.com



stylishladydress.com

Building F, No. 3 Nanpu Nangui Road, Luopu Street, Panyu District, Guangzhou City